



19410 JETTON ROAD SUITE 220 CORNELIUS, NC 28031  
704-659-7474 | INFO@DCESOLAR.COM  
WWW.DCESOLAR.COM

# LONG SPAN

## GROUND MOUNT SOLUTION

SOLAR RACKING WITH THE INDUSTRY'S MOST  
TOPOGRAPHICALLY ADAPTABLE PV SYSTEM

ELEVATING THE FUTURE OF SOLAR

---



# LONG SPAN

## GROUND MOUNT SOLUTION

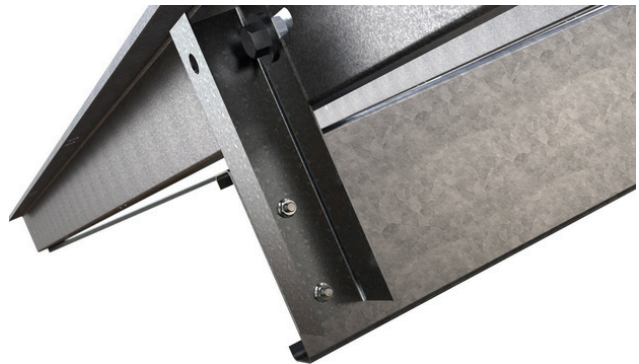
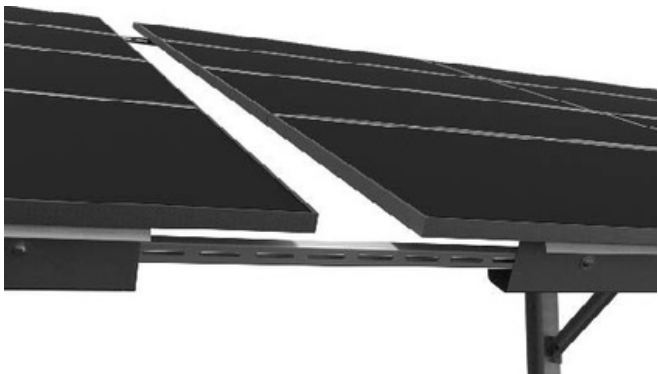
The most advanced table based racking solution with the DCE Long Span Racking System.

- The Long-Span pivot bracket allows for superior purlin adjustability
- Integrated wire management & direct panel frame mounting & bonding
- Driven Beam, ballast, or screw foundations accommodating all soil & site conditions
- Structurally independent tables to diminish terrain challenges

### HIGHER YIELD PER FOUNDATION

Engineered to maximize panel capacity while minimizing foundation requirements. With table sizes reaching up to 2x11 modules in portrait orientation, our design reduces the number of posts needed across an installation. By strategically analyzing each site's design criteria, we determine the optimal table size to enhance efficiency, lower material and labor costs, and increase overall project value per watt generated.

**PIVOT ADAPTER** The uniquely designed pivot adapter elevates each one-point purlin connection to drastically improve every table's adaptability to challenging topography. The fully grounded rows can adjust to changes up to 20% grade.



**INTEGRATED BONDING** Each continuous row is bonded using serrated hardware, therefore only one ground is needed per row. No additional costly grounding components needed such as WEEBS and star washers, lowering material and installation costs. This reduces labor time, hardware, and cost for additional bonding components. (Certified to UL 2703)

**FOUNDATION FLEXIBILITY** Ideal for maximizing your investment for virtually any condition – **Driven beam, ground screw, and ballasted foundation** variants available to minimize installation challenges or environmental demands – distinguishing Long Span brand versatility.

**INTEGRATED WIRE MANAGEMENT** The underside flange on panel beams give versatility for wire support, decreasing the need for additional wire management components and labor. Pre-punched weep holes help with moisture drainage. Integrated wire management and support are included as part of our base offer.

# LONG SPAN

## GROUND MOUNT SOLUTION

### STRUCTURAL COMPONENTS

Structural members are galvanized to the ASTM A653 standard, with ground penetrating components from G235 or better.



### TECHNICAL BENEFITS

- Minimal hardware
- Designed to custom fit the panel
- Fewer foundations per panel

### TECHNICAL SPECIFICATIONS

<b>Wind Load</b>	90 - 150 MPH
<b>Snow Load</b>	0 - 70 PSF
<b>Leading Module Height</b>	18" - 60" MAX
<b>Tilt Angle</b>	15 - 35 Degrees
<b>Module Suitability</b>	All Major Brands
<b>Panel Orientation</b>	Portrait (Up to 2H x 11W)
<b>Warranty</b>	20 Years



19410 JETTON ROAD SUITE 220 CORNELIUS, NC 28031  
704-659-7474 | INFO@DCESOLAR.COM |  
WWW.DCESOLAR.COM

DCE Solar is a market leader in industrial grade solar mounting and consulting. DCE designs, engineers, and manufactures the leading product line in the C&I and utility market.

DCE continues to set the gold standard with innovative solutions created and perfected by a trademarked, world-class engineering and support team.



*Higher wind, snow conditions, and panel frame profiles, are feasible but site specific and are subject to approval by DCE Engineers*

**PRODUCT IS MADE FROM AMERICAN STEEL, FABRICATED IN AMERICA, GROUND SCREW FOUNDATIONS CAN BE SUPPLIED FROM THE US UPON REQUEST**